

XW400D monoblock controllers

Solutions for monoblocks and condensing units

The high efficiency XW450D and the XW470D controllers are designed for the management of monoblocks and condensing units. They are also suitable for plug-in and semi plug-in refrigerated applications with up to 3 Propane circuits.

This series allows a low environmental impact as it is designed to be used with natural refrigerants applications. The energy efficiency is guaranteed through modulating loads as variable-speed compressors and condenser fans.

CLOUD SYSTEM
COMPATIBLE

XW400D controllers can be used combined with our Cloud solution in small applications such as small food stores, restaurants and C-stores.



High customization level through different user interfaces



Main benefits for:

OEMs

- **Speed up OEM production line**

Thanks to the automatic output testing, the manufacturer can verify correct wiring connections during the production line test.

- **Easy commissioning operations**

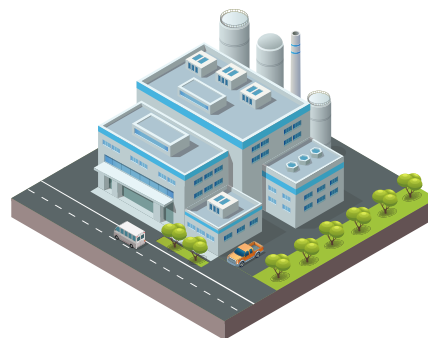
The controller memory contains up to 6 parameter maps (for normal or low temperature with modulating or on-off loads, and more). The user can select the most suitable one, to load pre-set applications.

- **Synchronization of main functions**

This function is highly valued for large cold rooms where it is fundamental to perform synchronized actions to increase efficiency, such as cooling demand, defrost, light or energy saving.

- **Homogeneous temperature control**

The use of multiple sensors allows an accurate control of the cold room temperature, and the anti-stratification function ensures the highest quality of fresh food.



FINAL USERS

- **Environmentally friendly**

These controllers are designed to deal with natural refrigerants (Propane R290) and are in compliance with the EN/UL60335-2-89 standard.

- **Energy saving**

The “Optimized Defrost Duration” (ODD) algorithm allows defrost termination as soon as the evaporator is clean, reducing its time of up to 20%.

- **Firmware update even remotely**

The firmware of the controller can be updated through the XWEB PRO monitoring system (in large applications) or through Bluetooth® keyboard. This avoids machine stops, which could result in wasted energy and resources, ensuring the controller is updated with the latest functions.

Technical features

MODELS	XW450D	XW470D
Probe supply	110Vac, 230Vac or 100÷240Vac	100÷240Vac
Probe inputs	2 x NTC/PTC/PT1000/NTC_US + 2 x NTC/PTC/PT1000/NTC_US/DI all configurable	3 x NTC/PTC/PT1000/NTC_US + 2 x NTC/PTC/PT1000/NTC_US/DI all configurable
Digital inputs	2 x configurable	3 x configurable
Relay outputs	2 x 16A SPST + 2 x 8A SPST + 1 x 5A SPST all configurable	2 x 16A SPST + 2 x 8A SPST + 1 x 5A SPST + 3 x 10A SPST all configurable
Hot Key output	present	present
0÷10Vdc output	present	2 x present
0÷10V/4÷20mA/PWM output	present	present
RS485 serial output	client	client
LAN output	up to 8 devices	up to 8 devices
Real time clock	present	present
Keyboards	CHW60, CT760, T620GT	CHW60, CT760, T620GT
Certifications	EN/UL60335-2-89	EN/UL60335-2-89